



OTOMOTİV SANAYİİ DERNEĐİ  
AUTOMOTIVE MANUFACTURERS ASSOCIATION

# OTOMOTİV SEKTÖRÜ AYLIK DEĐERLENDİRME RAPORU ŞUBAT 2025

AUTOMOTIVE INDUSTRY MONTHLY REPORT  
February 2025

OSD "OICA" Üyesidir  O I C A OSD is a Member of "OICA"

	2 - 2024	2 - 2025	%	1 - 2 / 2024	1 - 2 / 2025	%	3/2023 - 2/2024	3/2024 - 2/2025	%
Otomobil Üretimi/P.Cars Production	83.955	74.453	-11,3	151.014	141.496	-6,3	969.207	894.995	-7,7
Toplam Üretim/Total Production	131.994	114.346	-13,4	240.459	218.991	-8,9	1.485.054	1.343.828	-9,5
Otomobil Pazarı/P.Cars Market	82.277	76.021	-7,6	146.318	131.965	-9,8	1.017.464	965.988	-5,1
Toplam Pazar/Total Market	110.760	93.864	-15,3	193.282	164.324	-15,0	1.338.969	1.256.831	-6,1
Otomobil İthalatı/P.Cars Import	56.009	51.499	-8,1	98.216	88.917	-9,5	686.711	680.825	-0,9
Toplam İthalat/Total Import	73.510	63.538	-13,6	126.267	111.137	-12,0	860.733	878.389	2,1
Otomobil İhracatı/P.Cars Export	55.795	45.811	-17,9	100.198	93.127	-7,1	665.693	647.044	-2,8
Toplam İhracat/Total Export	89.389	79.977	-10,5	164.938	158.168	-4,1	1.025.041	1.006.264	-1,8
Otomobil İhracatı(\$)/P.Cars Export (\$)	875.161.227,08	825.373.543,21	-5,7	1.625.928.701	1.691.881.757	4,1	10.971.354.533	11.350.057.332	3,5
Toplam İhracat(\$)/Total Export (\$)*	3.127.827.002,84	2.940.618.578,09	-6,0	5.948.653.631	5.893.594.649	-0,9	36.100.199.773	36.690.516.077	1,6

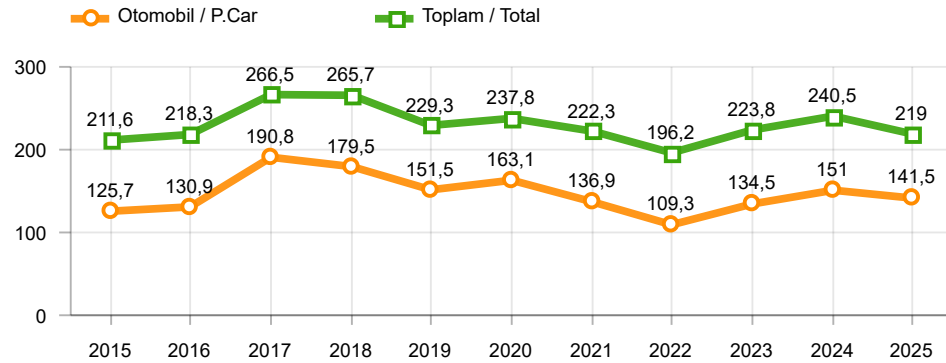
Parametreler/Parameters	2 - 2024	2 - 2025	%	1 - 2 / 2024	1 - 2 / 2025	%	3/2023 - 2/2024	3/2024 - 2/2025	%
ÜFE / PPI	3,7	2,1	-	8,0	5,2	-	45,7	37,6	-
TÜFE / CPI	4,5	2,3	-	11,5	7,4	-	55,9	53,8	-
Sanayi Endeksi / Industry Index	4,6	2,2	-	10,0	5,6	-	52,0	39,1	-
Dolar \$ ** (1 birim)	30,7	36,1	17,6	30,3	35,7	17,9	25,6	33,7	31,5
Euro € ** (1 birim)	33,1	37,6	13,4	32,9	37,1	12,8	27,7	36,1	30,4
Japon Yeni ¥ ** (100 birim)	20,4	23,6	15,5	20,4	23,1	12,8	17,7	22,0	24,0

\*Toplam Sanayi / Total Industry Including Components

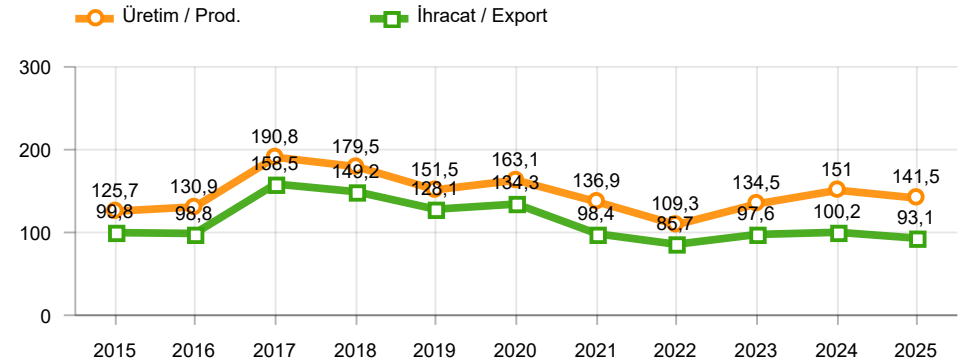
\*\* Ortalama Değerler / Average Values

Araç Tipleri / Types	2 / 2024	2 / 2025	2 % Değişim	1-2 / 2024	1-2 / 2025	1-2 % Değişim
OTOMOBİL / Pass.Car	83.955	74.453	-11,3	151.014	141.496	-6,3
<b>OTOMOBİL Toplam / Pass.Car Total</b>	<b>83.955</b>	<b>74.453</b>	<b>-11,3</b>	<b>151.014</b>	<b>141.496</b>	<b>-6,3</b>
B.KAMYON / H. Truck	3.726	1.058	-71,6	6.978	2.134	-69,4
K.KAMYON / L. Truck	460	236	-48,7	850	466	-45,2
KAMYONET / Pick Up	38.689	29.758	-23,1	72.196	58.129	-19,5
OTOBÜS / Bus	1.123	872	-22,4	2.032	1.652	-18,7
MINIBÜS / Minibus	3.557	7.581	113,1	6.487	14.393	121,9
MİDİBÜS / Midibus	484	388	-19,8	902	721	-20,1
<b>TİCARİ ARAÇLAR Toplam / Commercial Vehicles Total</b>	<b>48.039</b>	<b>39.893</b>	<b>-17,0</b>	<b>89.445</b>	<b>77.495</b>	<b>-13,4</b>
<b>TAŞIT ARAÇLARI Toplam / Motor Vehicles Total</b>	<b>131.994</b>	<b>114.346</b>	<b>-13,4</b>	<b>240.459</b>	<b>218.991</b>	<b>-8,9</b>
TRAKTÖR / F.Tractor	4.771	2.733	-42,7	9.025	5.357	-40,6
<b>TRAKTÖR Toplam / F.Tractor Total</b>	<b>4.771</b>	<b>2.733</b>	<b>-42,7</b>	<b>9.025</b>	<b>5.357</b>	<b>-40,6</b>
<b>GENEL TOPLAM / Grand Total</b>	<b>136.765</b>	<b>117.079</b>	<b>-14,4</b>	<b>249.484</b>	<b>224.348</b>	<b>-10,1</b>

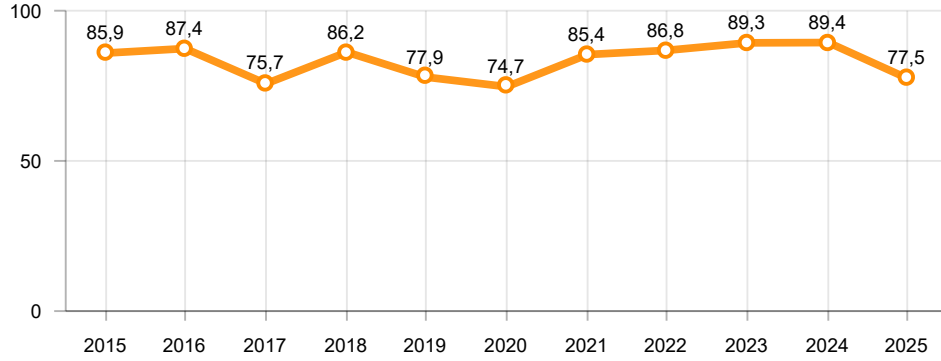
**Toplam Üretim ve Otomobil Üretimi (x1000)(OCAK - ŞUBAT)**  
Total & P.Cars Production (x1000)(January - February)



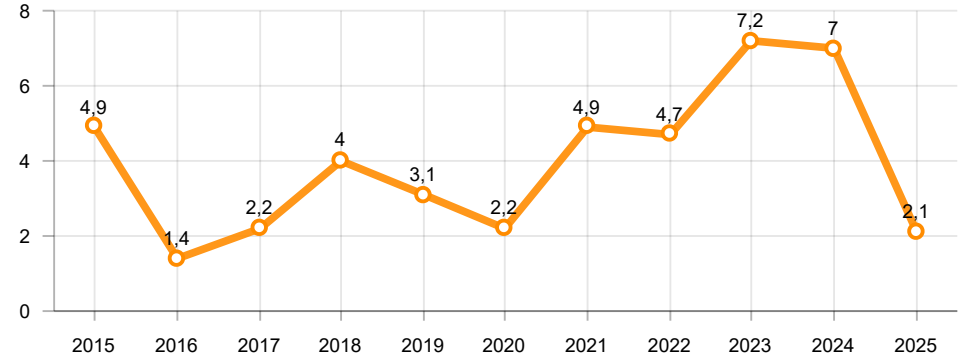
**Otomobil Üretimi ve İhracat (x1000)(OCAK - ŞUBAT)**  
P.Cars Production & Exports (x1000)(January - February)



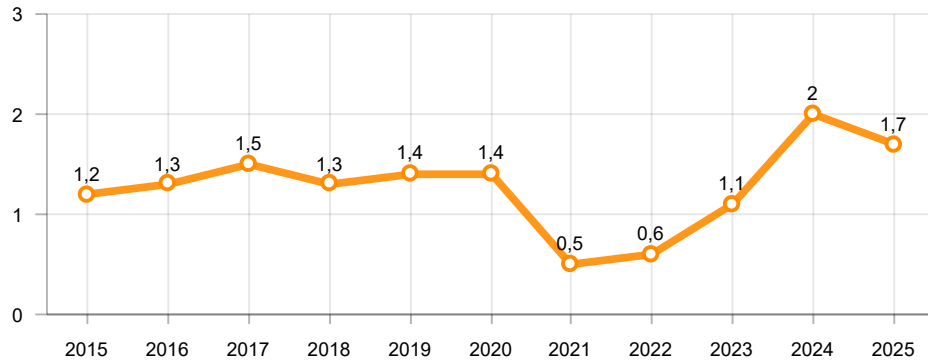
**Ticari Araç Üretimi (x1000)(OCAK - ŞUBAT)**  
Commercial Vehicle Production (x1000)(January - February)



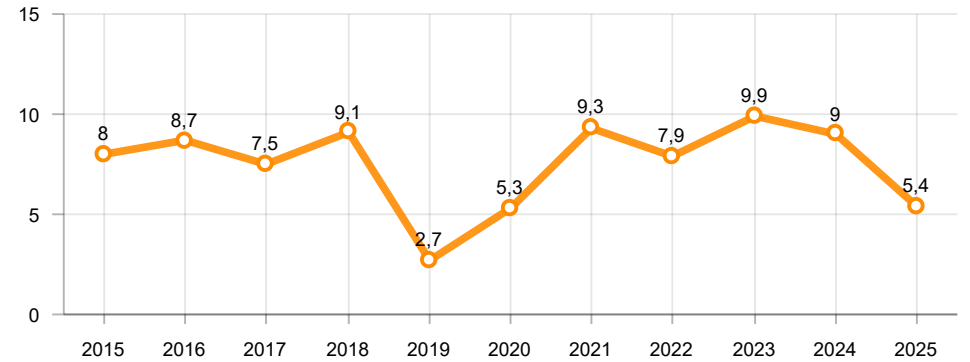
**Büyük Kamyon Üretimi (x1000)(OCAK - ŞUBAT)**  
Heavy Truck Production (x1000)(January - February)

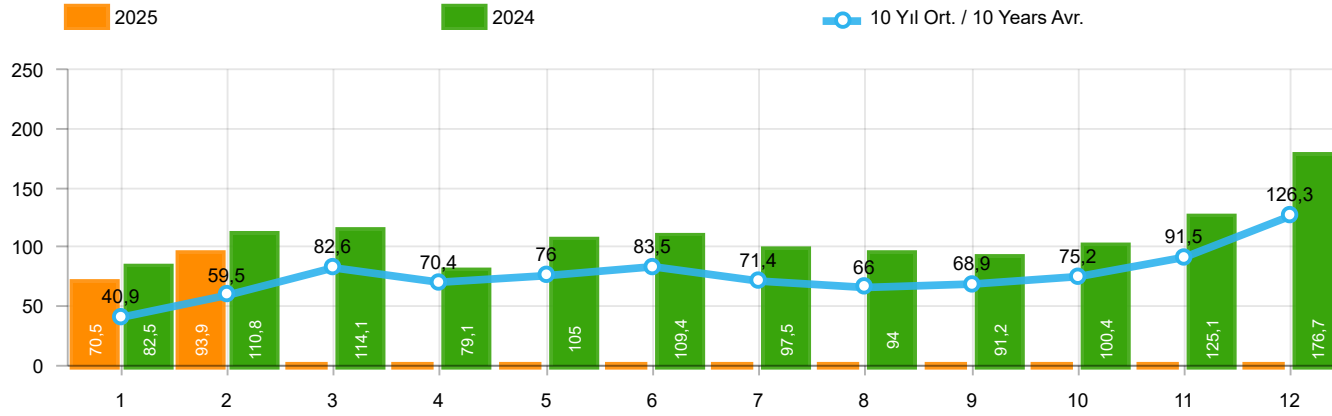


**Otobüs Üretimi (x1000)(OCAK - ŞUBAT)**  
Bus Production (x1000)(January - February)



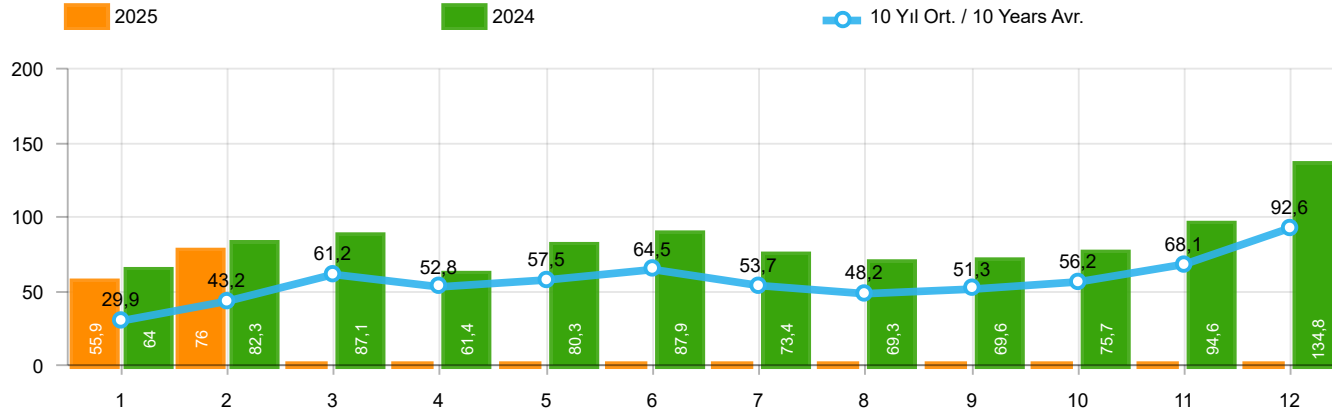
**Traktör Üretimi (x1000)(OCAK - ŞUBAT)**  
F. Tractor Production (x1000)(January - February)





Aylar / Months	10 Yıl Ort / 10 Years Avr.	2025	%
1	40.890	70.460	72,3
2	59.482	93.864	57,8
TOPLAM/TOTAL	100.373	164.324	63,7

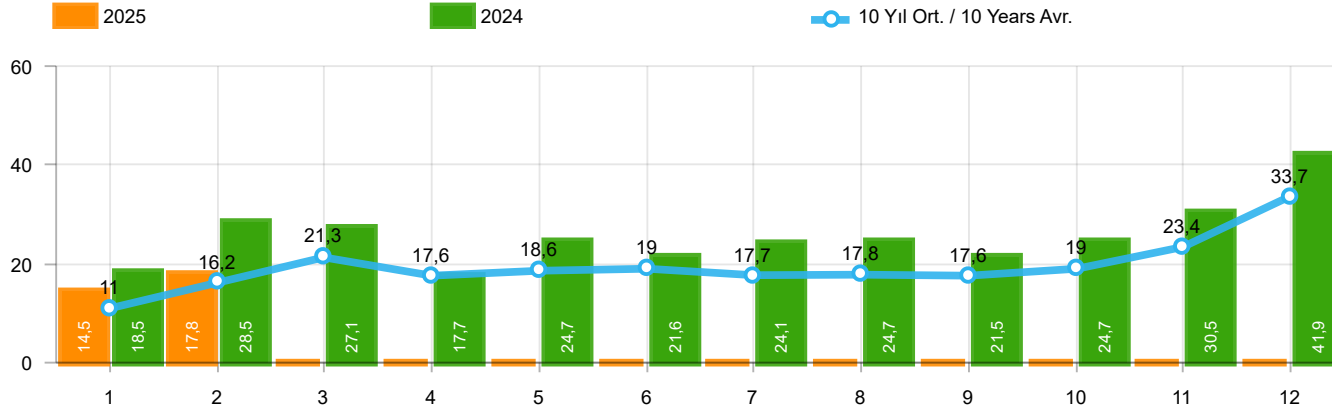
Yıl / Year	1	2	3	4	5	6	7	8	9	10	11	12	1-2 Toplam / Total	Toplam / Total	1-2 Yerli / Local	1-2 İthal / Import	İthal Oran / Import %
2015	37.256	59.221	89.765	96.182	85.804	91.071	87.358	85.244	67.181	67.086	88.431	164.464	96.477	1.019.063	37.750	58.727	60,9
2016	34.369	54.840	85.932	87.748	97.090	94.666	59.732	73.654	69.413	85.666	125.462	145.706	89.209	1.014.278	31.439	57.770	64,8
2017	36.640	48.585	76.178	78.231	88.066	85.820	84.727	74.818	74.046	94.439	103.772	141.507	85.225	986.829	32.728	52.497	61,6
2018	36.525	48.768	79.600	73.886	74.996	52.788	54.194	35.137	23.915	22.321	59.406	80.014	85.293	641.550	33.670	51.623	60,5
2019	14.847	25.569	50.651	31.944	33.947	43.899	18.442	26.832	43.068	50.288	59.575	92.885	40.416	491.947	17.407	23.009	56,9
2020	28.123	48.948	51.554	27.165	33.308	72.789	89.419	63.570	93.406	97.125	82.824	107.919	77.071	796.150	33.415	43.656	56,6
2021	45.308	61.325	100.046	64.551	57.510	83.304	49.732	60.573	59.717	60.064	64.087	66.633	106.633	772.850	45.924	60.709	56,9
2022	39.741	52.030	68.241	62.584	68.221	84.788	55.424	52.297	66.304	69.072	86.499	121.962	91.771	827.163	41.071	50.700	55,2
2023	53.578	84.781	109.658	102.076	116.227	116.352	117.647	93.409	100.862	105.181	119.527	164.748	138.359	1.284.046	56.999	81.360	58,8
2024	82.522	110.760	114.144	79.137	104.962	109.408	97.536	93.977	91.150	100.395	125.102	176.696	193.282	1.285.789	67.015	126.267	65,3
2025	70.460	93.864											164.324	164.324	53.187	111.137	67,6



Aylar / Months	10 Yıl Ort / 10 Years Avr.	2025	%
1	29.886	55.944	87,2
2	43.247	76.021	75,8
TOPLAM / TOTAL	73.133	131.965	80,5

Yıl / Year	1	2	3	4	5	6	7	8	9	10	11	12	1-2 Toplam / Total	Toplam / Total	1-2 Yerli / Local	1-2 İthal / Import	İthal Oran / Import %
2015	24.498	40.817	61.676	70.211	62.878	67.766	64.218	61.753	47.088	47.954	62.397	114.340	65.315	725.596	18.514	46.801	71,7
2016	23.358	40.588	63.975	65.618	73.832	71.111	45.566	53.977	51.340	63.746	95.783	108.044	63.946	756.938	17.491	46.455	72,6
2017	25.689	34.658	55.616	57.998	65.799	66.164	62.384	54.890	53.423	70.488	75.956	99.694	60.347	722.759	19.571	40.776	67,6
2018	26.611	35.901	59.798	55.108	57.227	41.225	42.024	26.976	17.595	16.809	46.204	60.843	62.512	486.321	21.631	40.881	65,4
2019	10.979	19.205	38.628	24.416	27.126	36.024	15.398	21.544	35.308	39.996	47.803	70.829	30.184	387.256	11.794	18.390	60,9
2020	22.016	37.727	39.887	21.825	25.073	57.067	69.427	44.372	71.296	76.341	64.357	80.721	59.743	610.109	23.500	36.243	60,7
2021	35.358	44.749	76.357	48.375	43.138	62.348	36.311	44.756	43.408	40.512	42.982	43.559	80.107	561.853	30.817	49.290	61,5
2022	29.020	37.641	50.173	45.564	51.750	64.134	41.031	35.230	44.681	47.440	59.222	86.774	66.661	592.660	24.988	41.673	62,5
2023	37.288	58.907	79.226	77.398	87.418	91.135	87.416	69.131	78.971	82.611	91.424	126.416	96.195	967.341	34.201	61.994	64,4
2024	64.041	82.277	87.071	61.448	80.260	87.858	73.396	69.288	69.634	75.662	94.595	134.811	146.318	980.341	48.560	97.758	66,8
2025	55.944	76.021											131.965	131.965	43.048	88.917	67,4

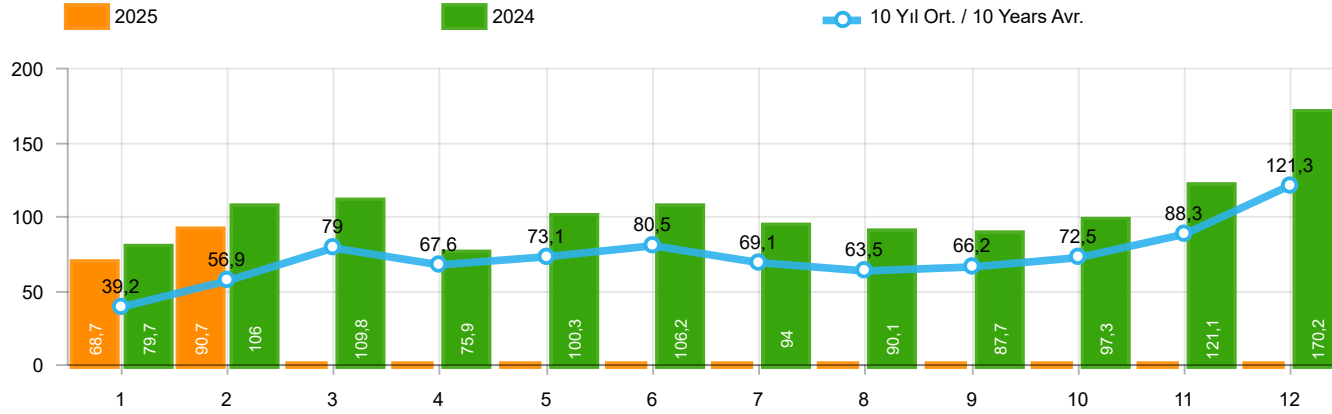
**Ticari Araç Pazarının Analizi(x1000)(OCAK - ŞUBAT)**  
CV Market Analysis(x1000)(January - February)



Aylar / Months	10 Yıl Ort / 10 Years Avr.	2025	%
1	11.005	14.516	31,9
2	16.236	17.843	9,9
TOPLAM / TOTAL	27.241	32.359	18,8

Yıl / Year	1	2	3	4	5	6	7	8	9	10	11	12	1-2 Toplam / Total	Toplam / Total	1-2 Yerli / Local	1-2 İthal / Import	İthal Oran / Import %
2015	12.758	18.404	28.089	25.971	22.926	23.305	23.140	23.491	20.093	19.132	26.034	50.124	31.162	293.467	19.236	11.926	38,3
2016	11.011	14.252	21.957	22.130	23.258	23.555	14.166	19.677	18.073	21.920	29.679	37.662	25.263	257.340	13.948	11.315	44,8
2017	10.951	13.927	20.562	20.233	22.267	19.656	22.343	19.928	20.623	23.951	27.816	41.813	24.878	264.070	13.157	11.721	47,1
2018	9.914	12.867	19.802	18.778	17.769	11.563	12.170	8.161	6.320	5.512	13.202	19.171	22.781	155.229	12.039	10.742	47,2
2019	3.868	6.364	12.023	7.528	6.821	7.875	3.044	5.288	7.760	10.292	11.772	22.056	10.232	104.691	5.613	4.619	45,1
2020	6.107	11.221	11.667	5.340	8.235	15.722	19.992	19.198	22.110	20.784	18.467	27.198	17.328	186.041	9.915	7.413	42,8
2021	9.950	16.576	23.689	16.176	14.372	20.956	13.421	15.817	16.309	19.552	21.105	23.074	26.526	210.997	15.107	11.419	43,0
2022	10.721	14.389	18.068	17.020	16.471	20.654	14.393	17.067	21.623	21.632	27.277	35.188	25.110	234.503	16.083	9.027	35,9
2023	16.290	25.874	30.432	24.678	28.809	25.217	30.231	24.278	21.891	22.570	28.103	38.332	42.164	316.705	22.798	19.366	45,9
2024	18.481	28.483	27.073	17.689	24.702	21.550	24.140	24.689	21.516	24.733	30.507	41.885	46.964	305.448	18.455	28.509	60,7
2025	14.516	17.843											32.359	32.359	10.139	22.220	68,7

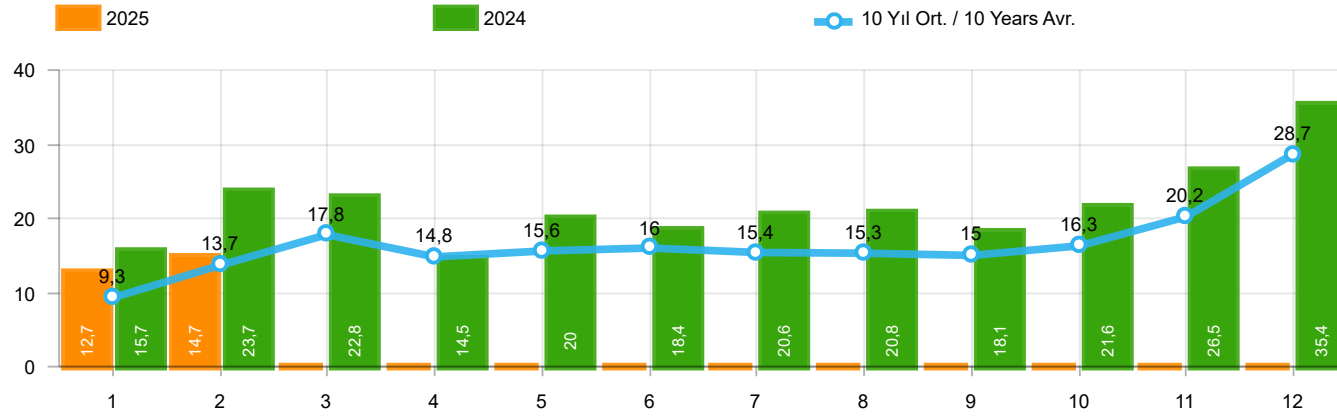
### Hafif Araç Pazarının Analizi(x1000)(OCAK - ŞUBAT) LV Market Analysis(x1000)(January - February)



Aylar / Months	10 Yıl Ort / 10 Years Avr.	2025	%
1	39.183	68.654	75,2
2	56.942	90.730	59,3
TOPLAM / TOTAL	96.125	159.384	65,8

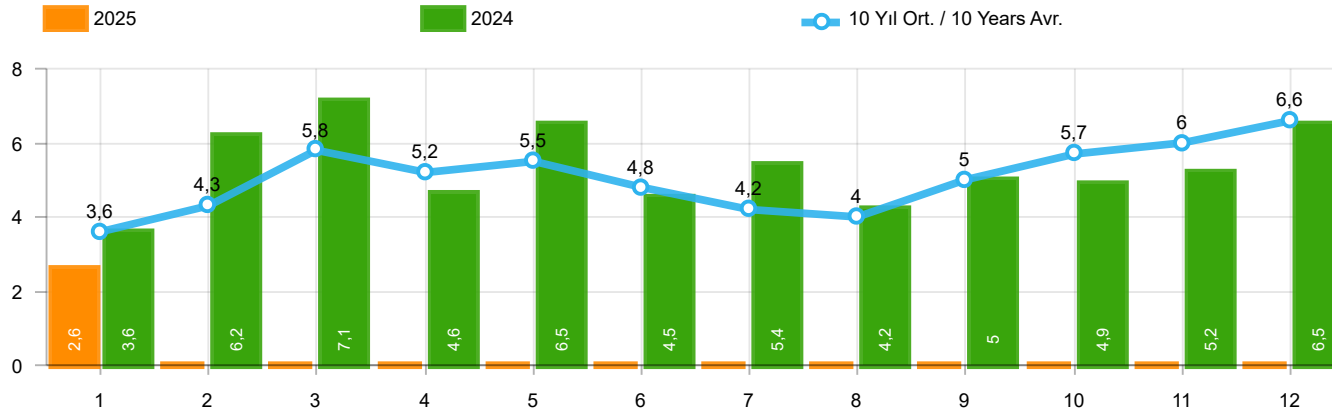
Yıl / Year	1	2	3	4	5	6	7	8	9	10	11	12	1-2 Toplam / Total	Toplam / Total	1-2 Yerli / Local	1-2 İthal / Import	İthal Oran / Import %
2015	34.615	55.331	83.302	91.602	81.542	86.158	83.836	82.577	64.025	64.255	84.601	156.173	89.946	968.017	32.531	57.415	63,8
2016	32.713	52.825	82.948	84.887	93.904	91.540	58.533	71.556	67.593	83.000	122.309	141.912	85.538	983.720	28.901	56.637	66,2
2017	35.323	46.965	73.802	75.988	85.422	83.658	82.297	72.536	71.352	91.752	100.859	136.240	82.288	956.194	30.474	51.814	63,0
2018	35.076	47.009	76.345	71.126	72.755	51.037	52.734	34.346	23.028	21.571	58.204	77.706	82.085	620.937	31.493	50.592	61,6
2019	14.373	24.875	49.221	30.971	33.016	42.688	17.927	26.246	41.992	49.075	58.176	90.500	39.248	479.060	16.584	22.664	57,7
2020	27.273	47.122	50.008	26.457	32.235	70.973	87.401	61.533	90.619	94.733	80.141	104.293	74.395	772.788	31.463	42.932	57,7
2021	43.728	58.504	96.428	61.488	54.734	79.819	47.849	58.454	57.141	56.746	60.216	62.243	102.232	737.350	42.943	59.289	58,0
2022	38.131	49.652	64.267	60.035	65.167	80.652	52.206	48.336	62.084	65.222	82.311	115.220	87.783	783.283	38.211	49.572	56,5
2023	50.894	81.148	103.929	97.679	111.556	112.163	113.959	89.454	96.793	101.367	115.040	158.653	132.042	1.232.635	52.566	79.476	60,2
2024	79.701	105.990	109.828	75.919	100.305	106.238	94.037	90.134	87.740	97.274	121.094	170.249	185.691	1.238.509	61.695	123.996	66,8
2025	68.654	90.730											159.384	159.384	50.049	109.335	68,6





Aylar / Months	10 Yıl Ort / 10 Years Avr.	2025	%
1	9.297	12.710	36,7
2	13.695	14.709	7,4
TOPLAM / TOTAL	22.992	27.419	19,3

Yıl / Year	1	2	3	4	5	6	7	8	9	10	11	12	1-2 Toplam / Total	Toplam / Total	1-2 Yerli / Local	1-2 İthal / Import	İthal Oran / Import %
2015	10.117	14.514	21.626	21.391	18.664	18.392	19.618	20.824	16.937	16.301	22.204	41.833	24.631	242.421	14.017	10.614	43,1
2016	9.355	12.237	18.973	19.269	20.072	20.429	12.967	17.579	16.253	19.254	26.526	33.868	21.592	226.782	11.410	10.182	47,2
2017	9.634	12.307	18.186	17.990	19.623	17.494	19.913	17.646	17.929	21.264	24.903	36.546	21.941	233.435	10.903	11.038	50,3
2018	8.465	11.108	16.547	16.018	15.528	9.812	10.710	7.370	5.433	4.762	12.000	16.863	19.573	134.616	9.862	9.711	49,6
2019	3.394	5.670	10.593	6.555	5.890	6.664	2.529	4.702	6.684	9.079	10.373	19.671	9.064	91.804	4.790	4.274	47,2
2020	5.257	9.395	10.121	4.632	7.162	13.906	17.974	17.161	19.323	18.392	15.784	23.572	14.652	162.679	7.963	6.689	45,7
2021	8.370	13.755	20.071	13.113	11.596	17.471	11.538	13.698	13.733	16.234	17.234	18.684	22.125	175.497	12.126	9.999	45,2
2022	9.111	12.011	14.094	14.471	13.417	16.518	11.175	13.106	17.403	17.782	23.089	28.446	21.122	190.623	13.223	7.899	37,4
2023	13.606	22.241	24.703	20.281	24.138	21.028	26.543	20.323	17.822	18.756	23.616	32.237	35.847	265.294	18.365	17.482	48,8
2024	15.660	23.713	22.757	14.471	20.045	18.380	20.641	20.846	18.106	21.612	26.499	35.438	39.373	258.168	13.135	26.238	66,6
2025	12.710	14.709											27.419	27.419	7.001	20.418	74,5



Aylar / Months	10 Yıl Ort / 10 Years Avr.	2025	%
1	3.561	2.577	-27,6
TOPLAM / TOTAL	3.561	2.577	-27,6

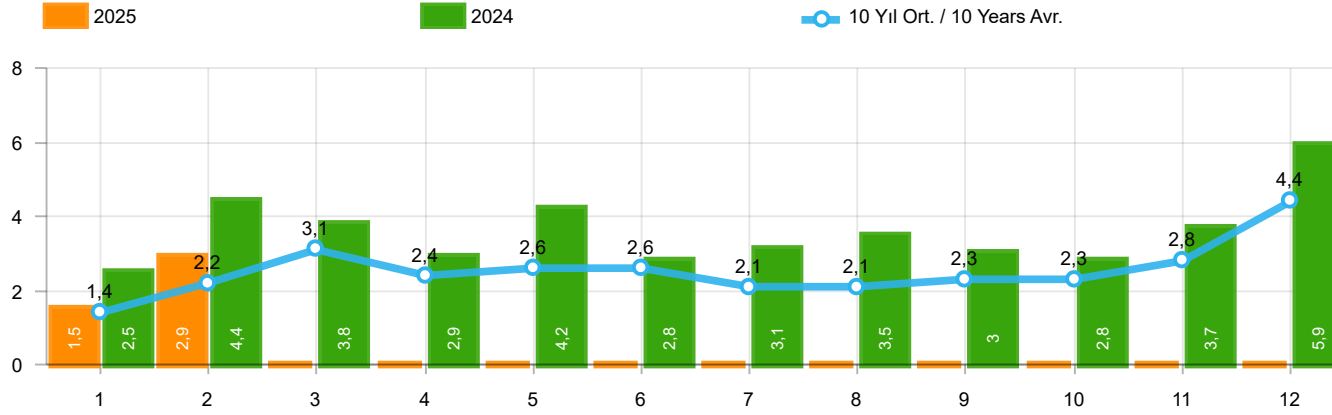
Yıl / Year	1	2	3	4	5	6	7	8	9	10	11	12	1-1 Toplam / Total	Toplam / Total
2015	3.124	3.984	5.460	6.383	6.078	5.748	4.677	5.044	4.765	7.049	6.898	7.564	3.124	66.774
2016	3.739	4.731	7.067	6.546	6.575	5.543	3.833	5.134	4.945	7.372	7.090	7.603	3.739	70.178
2017	3.974	4.964	6.773	6.780	7.057	5.356	5.003	4.396	6.064	7.734	7.457	7.351	3.974	72.909
2018	4.362	4.179	5.925	5.216	4.584	3.146	3.654	2.587	3.541	3.698	3.578	3.886	4.362	48.356
2019	1.311	1.401	2.143	2.126	2.229	1.538	2.039	1.579	2.284	2.828	3.037	3.782	1.311	26.297
2020	2.425	2.778	3.771	2.606	3.244	4.173	3.727	3.974	4.928	5.466	5.831	6.221	2.425	49.144
2021	4.411	5.395	6.845	5.581	4.200	5.571	3.846	3.093	6.100	5.351	6.901	6.776	4.411	64.070
2022	3.152	3.636	4.988	5.408	5.873	6.520	3.985	4.740	6.265	6.542	7.514	8.319	3.152	66.942
2023	5.533	5.569	7.959	6.433	8.511	6.269	6.221	5.072	5.943	5.897	6.219	8.275	5.533	77.901
2024	3.577	6.152	7.115	4.567	6.470	4.491	5.390	4.225	4.969	4.889	5.223	6.478	3.577	63.546
2025	2.577	-											2.577	2.577

Kaynak: TÜİK trafik kayıtları.

Rakamlar, son iki model yılına ait traktör tescillerinden oluşmaktadır.

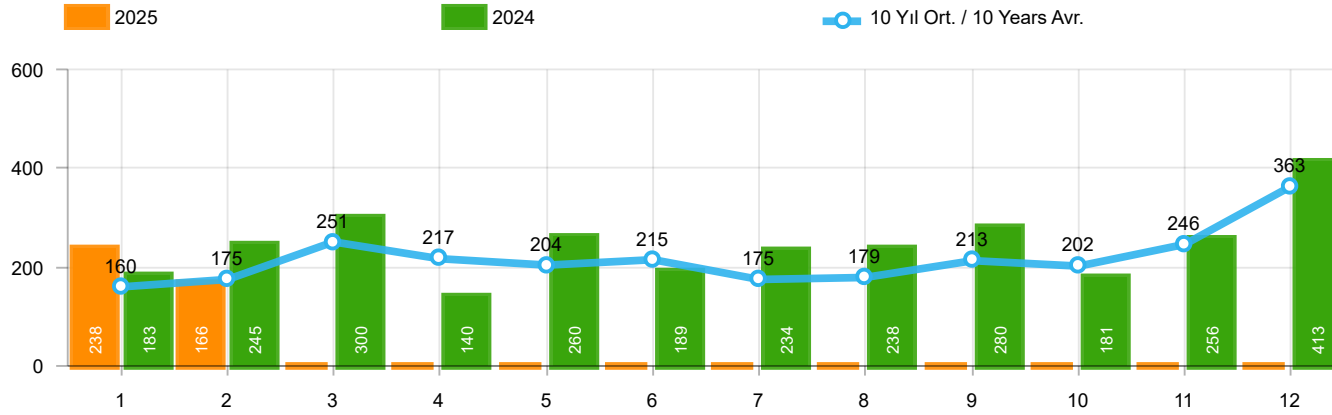
Source: Turkish Statistical Institute – Traffic registrations

Data represents the last two model year's farm tractors registration figures



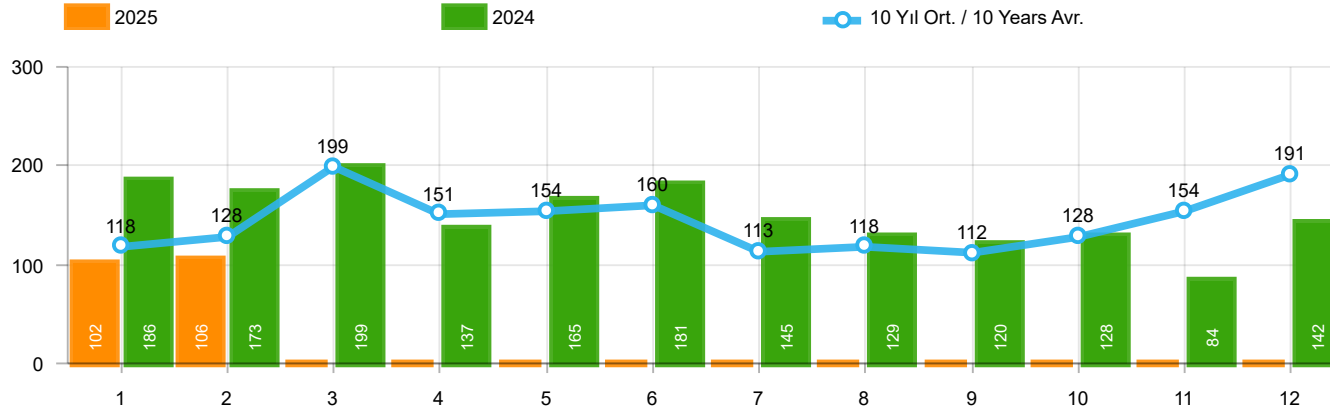
Aylar / Months	10 Yıl Ort / 10 Years Avr.	2025	%
1	1.430	1.466	2,5
2	2.238	2.862	27,9
TOPLAM / TOTAL	3.668	4.328	18,0

Yıl / Year	1	2	3	4	5	6	7	8	9	10	11	12	1-2 Toplam / Total	Toplam / Total	1-2 Yerli / Local	1-2 İthal / Import	İthal Oran / Import %
2015	2.215	3.346	5.699	3.729	3.600	4.253	2.922	2.211	2.687	2.266	3.146	7.307	5.561	43.381	4.260	1.301	23,4
2016	1.167	1.648	2.515	2.319	2.711	2.623	984	1.796	1.438	2.238	2.485	3.127	2.815	25.051	1.682	1.133	40,2
2017	931	1.290	1.982	1.888	2.184	1.891	1.974	1.860	2.284	2.188	2.487	4.438	2.221	25.397	1.548	673	30,3
2018	1.237	1.552	2.630	2.328	1.909	1.272	1.235	603	653	488	905	1.695	2.789	16.507	1.759	1.030	36,9
2019	342	579	1.255	842	728	981	435	497	854	1.047	1.100	2.087	921	10.747	576	345	37,5
2020	682	1.475	1.290	628	921	1.570	1.809	1.835	2.660	2.239	2.537	3.358	2.157	21.004	1.433	724	33,6
2021	1.366	2.633	3.319	2.788	2.617	3.238	1.799	1.942	2.377	3.067	3.549	4.045	3.999	32.740	2.579	1.420	35,5
2022	1.498	2.148	3.520	2.260	2.701	3.764	2.939	3.617	3.811	3.574	3.777	6.214	3.646	39.823	2.518	1.128	30,9
2023	2.406	3.356	5.162	3.951	4.321	3.820	3.334	3.526	3.674	3.425	4.077	5.642	5.762	46.694	3.878	1.884	32,7
2024	2.452	4.352	3.817	2.941	4.232	2.800	3.120	3.476	3.010	2.812	3.668	5.892	6.804	42.572	4.533	2.271	33,4
2025	1.466	2.862											4.328	4.328	2.526	1.802	41,6



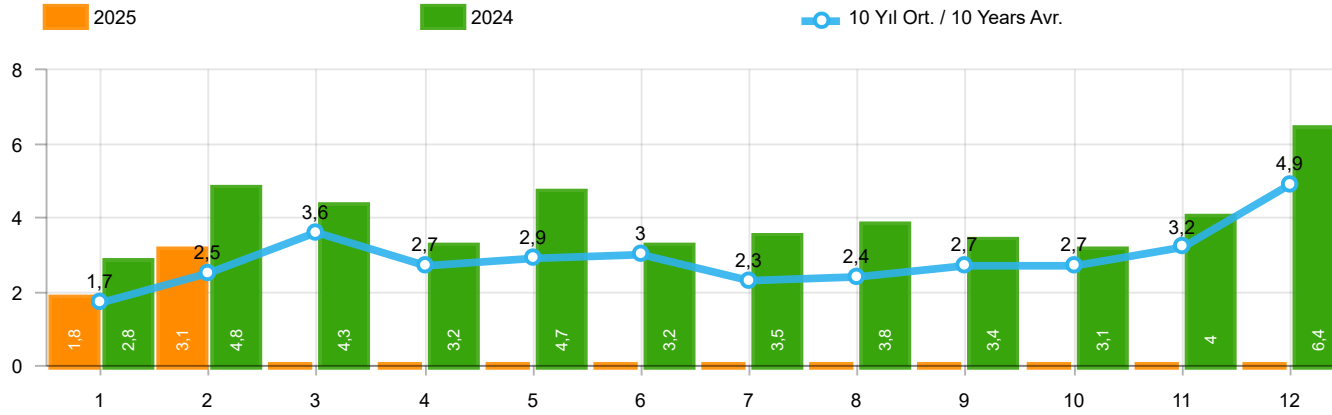
Aylar / Months	10 Yıl Ort / 10 Years Avr.	2025	%
1	160	238	48,4
2	175	166	-5,2
TOPLAM / TOTAL	336	404	20,4

Yıl / Year	1	2	3	4	5	6	7	8	9	10	11	12	1-2 Toplam / Total	Toplam / Total
2015	280	322	451	561	372	405	389	253	316	394	325	621	602	4.689
2016	309	158	251	302	261	196	139	220	241	230	354	431	467	3.092
2017	212	211	227	231	272	156	250	235	318	268	317	594	423	3.291
2018	134	142	410	296	207	315	180	146	160	155	184	425	276	2.754
2019	57	61	63	96	106	189	55	44	138	138	257	244	118	1.448
2020	104	221	128	35	97	134	111	123	77	71	82	137	325	1.320
2021	70	108	117	135	58	131	44	139	153	178	188	172	178	1.493
2022	82	132	234	131	220	224	147	169	227	154	217	292	214	2.229
2023	173	151	329	241	183	209	200	226	215	254	284	301	324	2.766
2024	183	245	300	140	260	189	234	238	280	181	256	413	428	2.919
2025	238	166											404	404



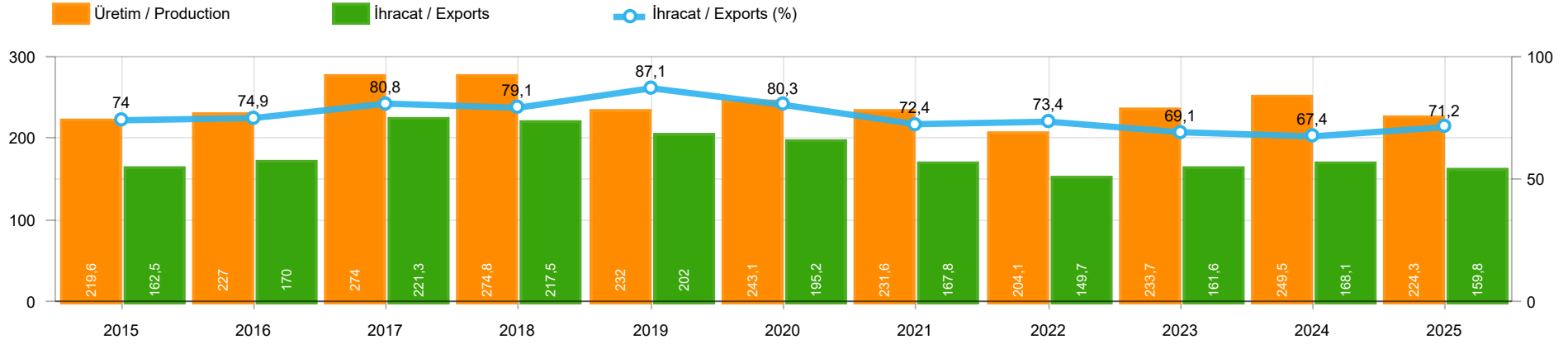
Aylar / Months	10 Yıl Ort / 10 Years Avr.	2025	%
1	118	102	-13,7
2	128	106	-16,9
TOPLAM / TOTAL	246	208	-15,4

Yıl / Year	1	2	3	4	5	6	7	8	9	10	11	12	1-2 Toplam / Total	Toplam / Total	1-2 Yerli / Local	1-2 İthal / Import	İthal Oran / Import %
2015	146	222	313	290	290	255	211	203	153	171	359	363	368	2.976	357	11	3,0
2016	180	209	218	240	214	307	76	82	141	198	314	236	389	2.415	389	-	-
2017	174	119	167	124	188	115	206	187	92	231	109	235	293	1.947	283	10	3,4
2018	78	65	215	136	125	164	45	42	74	107	113	188	143	1.352	142	1	0,7
2019	75	54	112	35	97	41	25	45	84	28	42	54	129	692	129	-	-
2020	64	130	128	45	55	112	98	79	50	82	64	131	194	1.038	194	-	-
2021	144	80	182	140	101	116	40	38	46	73	134	173	224	1.267	224	-	-
2022	30	98	220	158	133	148	132	175	182	122	194	236	128	1.828	128	-	-
2023	105	126	238	205	167	160	154	203	180	135	126	152	231	1.951	231	-	-
2024	186	173	199	137	165	181	145	129	120	128	84	142	359	1.789	359	-	-
2025	102	106											208	208	208	-	-



Aylar / Months	10 Yıl Ort / 10 Years Avr.	2025	%
1	1.708	1.806	5,7
2	2.541	3.134	23,4
TOPLAM / TOTAL	4.249	4.940	16,3

Yıl / Year	1	2	3	4	5	6	7	8	9	10	11	12	1-2 Toplam / Total	Toplam / Total	1-2 Yerli / Local	1-2 İthal / Import	İthal Oran / Import %
2015	2.641	3.890	6.463	4.580	4.262	4.913	3.522	2.667	3.156	2.831	3.830	8.291	6.531	51.046	5.219	1.312	20,1
2016	1.656	2.015	2.984	2.861	3.186	3.126	1.199	2.098	1.820	2.666	3.153	3.794	3.671	30.558	2.538	1.133	30,9
2017	1.317	1.620	2.376	2.243	2.644	2.162	2.430	2.282	2.694	2.687	2.913	5.267	2.937	30.635	2.254	683	23,3
2018	1.449	1.759	3.255	2.760	2.241	1.751	1.460	791	887	750	1.202	2.308	3.208	20.613	2.177	1.031	32,1
2019	474	694	1.430	973	931	1.211	515	586	1.076	1.213	1.399	2.385	1.168	12.887	823	345	29,5
2020	850	1.826	1.546	708	1.073	1.816	2.018	2.037	2.787	2.392	2.683	3.626	2.676	23.362	1.952	724	27,1
2021	1.580	2.821	3.618	3.063	2.776	3.485	1.883	2.119	2.576	3.318	3.871	4.390	4.401	35.500	2.981	1.420	32,3
2022	1.610	2.378	3.974	2.549	3.054	4.136	3.218	3.961	4.220	3.850	4.188	6.742	3.988	43.880	2.860	1.128	28,3
2023	2.684	3.633	5.729	4.397	4.671	4.189	3.688	3.955	4.069	3.814	4.487	6.095	6.317	51.411	4.433	1.884	29,8
2024	2.821	4.770	4.316	3.218	4.657	3.170	3.499	3.843	3.410	3.121	4.008	6.447	7.591	47.280	5.320	2.271	29,9
2025	1.806	3.134											4.940	4.940	3.138	1.802	36,5



	2015	2016	2017	2018	2019	2020	2021	2022	2023	2024	2025
<b>İhracat/Export</b>	162.455	169.959	221.307	217.458	202.039	195.226	167.770	149.747	161.560	168.085	159.820
<b>Üretim/Production</b>	219.557	227.042	273.976	274.803	232.023	243.051	231.578	204.077	233.733	249.484	224.348
<b>İhracat/Exports (%)</b>	74	74,9	80,8	79,1	87,1	80,3	72,4	73,4	69,1	67,4	71,2

**Taşıt Araçları İhracatı (2023 - 2025)**  
Motor Vehicle Exports (2023 - 2025)

SEKTÖR / SECTOR	2023	2024	1/2-2024	1/2-2025	2025/2024 %
OTOMOBİL / Pass.Car	663.090	654.115	100.198	93.127	-7,1
<b>OTOMOBİL TOPLAM / Pass. Car Total</b>	<b>663.090</b>	<b>654.115</b>	<b>100.198</b>	<b>93.127</b>	<b>-7,1</b>
KAMYON / Truck	21.566	10.024	2.860	944	-67,0
KAMYONET / Pick Up	291.052	279.520	54.793	47.825	-12,7
OTOBÜS / Bus	9.447	8.674	1.486	1.491	0,3
MİNİBÜS / Minibus	31.421	58.922	5.267	14.601	177,2
MİDİBÜS / Midibus	1.671	1.779	334	180	-46,1
<b>TİCARİ ARAÇLAR TOPLAM / Commercial Vehicle Total</b>	<b>355.157</b>	<b>358.919</b>	<b>64.740</b>	<b>65.041</b>	<b>0,5</b>
<b>TAŞIT ARAÇLARI TOPLAM / Motor Vehicles Total</b>	<b>1.018.247</b>	<b>1.013.034</b>	<b>164.938</b>	<b>158.168</b>	<b>-4,1</b>
TRAKTÖR / F.Tractor	16.752	12.976	3.147	1.652	-47,5
<b>TRAKTÖR TOPLAM / F.Tractor Total</b>	<b>16.752</b>	<b>12.976</b>	<b>3.147</b>	<b>1.652</b>	<b>-47,5</b>
<b>GENEL TOPLAM / GRAND TOTAL</b>	<b>1.034.999</b>	<b>1.026.010</b>	<b>168.085</b>	<b>159.820</b>	<b>-4,9</b>

**Üretici Bazında İhracat (adet)**  
Exports by Manufacturer (unit)

Üreticiler / Manufacturers	2023	2024	1-2 / 2024	1-2 / 2025
A.I.O.S.	1.102	1.067	205	72
FORD OTOSAN	311.104	330.240	56.158	60.410
HATTAT TRAKTÖR	736	460	91	59
HYUNDAI MOTOR TÜRKİYE	205.200	204.000	37.283	34.500
KARSAN	428	487	50	16
M. BENZ TÜRK	18.062	9.134	2.612	871
MAN TÜRKİYE	2.933	2.413	605	513
OTOKAR	2.584	2.240	256	291
OYAK RENAULT	230.397	241.398	29.925	36.192
TEMSA	1.161	1.386	241	239
TOFAŞ	60.479	33.568	10.335	3.029
TOYOTA	184.797	187.101	27.268	22.035
TÜRK TRAKTÖR	16.016	12.516	3.056	1.593
<b>GENEL TOPLAM / Grand Total</b>	<b>1.034.999</b>	<b>1.026.010</b>	<b>168.085</b>	<b>159.820</b>



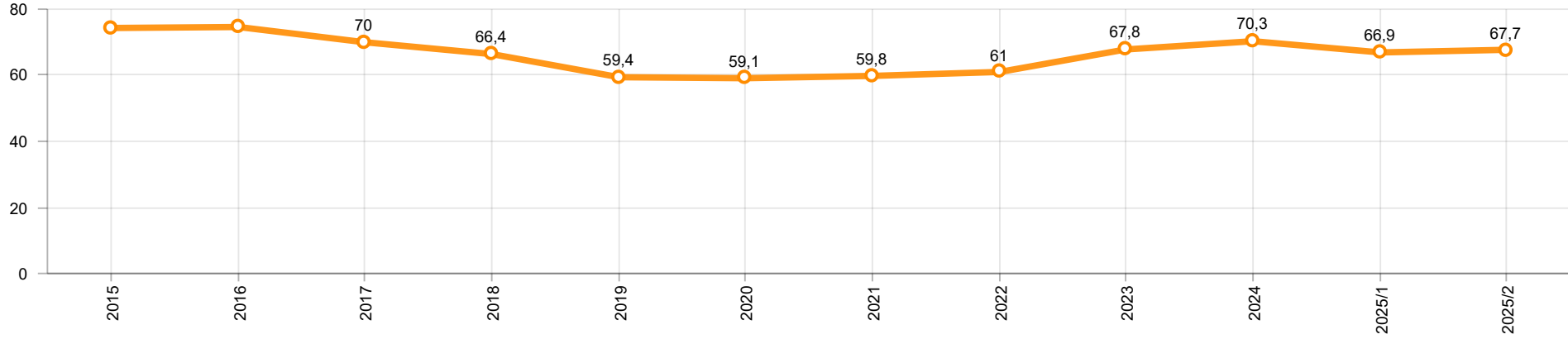
**Otomotiv Ana ve Yan Sanayii İhracatı (ABD \$)**  
CBU and CKD Exports - \$

Sektör / Sector	2023	2024	OCAK - ŞUBAT / January - February 2024	OCAK - ŞUBAT / January - February 2025	2025 / 2024 %
<b>Toplam Yan Sanayi / Total Component Industry</b>	<b>14.078.295.394,55</b>	<b>14.839.169.793,6</b>	<b>2.438.467.993,71</b>	<b>2.488.601.354,06</b>	<b>2,1</b>
İç ve Dış Lastik / Tyres	1.724.808.180,08	1.695.712.002,38	277.361.673,07	294.760.461,85	6,3
Emniyet Camı / Safety Glasses	263.055.895,3	280.208.750,29	44.916.700,62	45.134.570,61	0,5
Motor / Engine	253.590.728,57	382.946.759,3	46.043.672,67	81.768.413,98	77,6
Akümülatör / Batteries	482.228.706,9	574.440.860,83	88.675.470,61	79.358.792,89	-10,5
Diğer Aksam ve Parça / Spare Parts&Components	11.354.611.883,7	11.905.861.420,8	1.981.470.476,74	1.987.579.114,73	0,3
<b>Toplam Ana Sanayi / Total Vehicle Industry</b>	<b>21.608.331.077,73</b>	<b>21.911.627.756,63</b>	<b>3.510.185.637,39</b>	<b>3.404.993.294,96</b>	<b>-3,0</b>
Otobüs / Bus	1.786.354.748,27	1.928.277.914,79	295.745.918,28	325.400.815,14	10,0
Midibüs-Minibüs / Midibus-Minibus	342.622.940,87	458.784.135,36	71.118.653,46	63.858.705,08	-10,2
Otomobil / P.Cars	10.934.266.126,78	11.284.675.238,86	1.625.928.700,86	1.691.881.757,29	4,1
Kamyon-Kamyonet / Truck-Pick Up&Van	5.646.557.915,75	6.387.961.337,89	1.132.318.114,32	1.123.147.362,38	-0,8
Römork ve Yarı Römork / Trailer-Semi Trailer	777.402.947,62	670.091.733,43	99.250.571,1	79.872.588,15	-19,5
Çekici / Tractor	1.527.261.816,27	653.234.993,5	196.556.934,53	56.176.992,71	-71,4
Tarım Traktörü / Farm Tractor	593.864.582,17	528.602.402,8	89.266.744,84	64.655.074,21	-27,6
<b>Toplam / Total</b>	<b>35.686.626.472,28</b>	<b>36.750.797.550,23</b>	<b>5.948.653.631,1</b>	<b>5.893.594.649,02</b>	<b>-0,9</b>

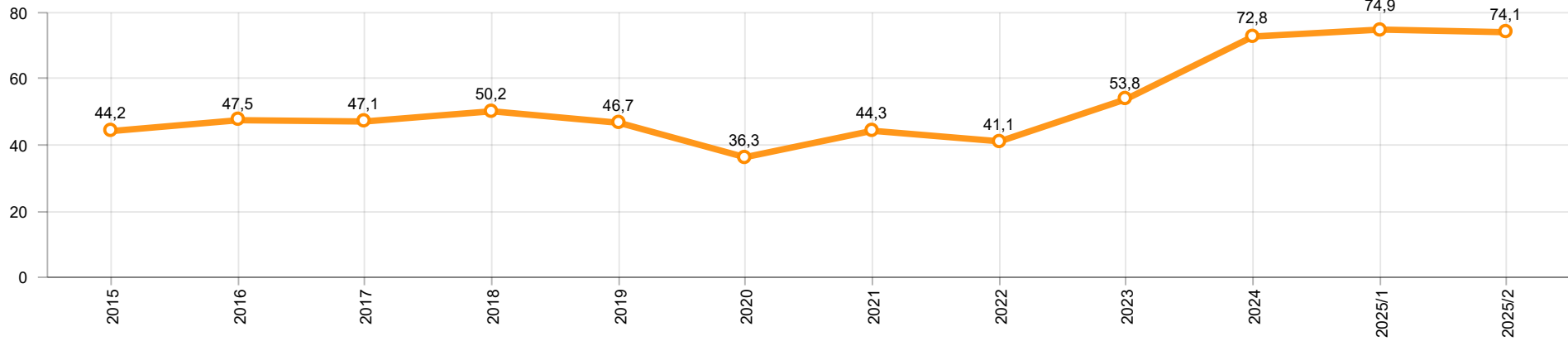
Kaynak: Uludağ İhracatçı Birlikleri . ÜİB tarafından OSD için özel olarak analiz edilen Otomotiv İhracatı kapsamında; ÜİB Türkiye Geneli Otomotiv Endüstrisi sınıflandırmasına kıyasla "Römork ve Yarı Römork" , "Tarım Traktörü" verileri dahil edilmekte; "Kullanılmış Araçlar" , "İki Tekerlekli Taşıtlar" , "Demiryolu Taşıtları" hariç tutulmaktadır.

Source: Uludağ Exporters Association – Special Analyze for OSD.Compared to Turkish General Automotive Industry classification, this special analyze includes; farms tractors, trailers and semi-trailers, does not include; used vehicles, two-wheeled vehicles and railway vehicles

**Otomobil Pazarında İthalatın Payı (%)**  
Import Share in P.Car Market (%)



**Hafif Ticari Araçlar Pazarında İthalatın Payı (%)**  
Import Share in LCV Market (%)



Araç Tipleri / Vehicle Types	1	2	3	4	5	6	7	8	9	10	11	12	Toplam / Total
<b>OTOMOBİL - Pass.Car</b>	<b>47.316</b>	<b>45.811</b>											<b>93.127</b>
KAMYON - H. Truck	431	503											934
K.KAMYON - L. Truck	-	10											10
KAMYONET - Pick Up	22.491	25.334											47.825
OTOBÜS - Bus	703	788											1.491
MİNİBÜS - Minibus	7.178	7.423											14.601
MİDİBÜS - Midibus	72	108											180
<b>TİCARİ ARAÇLAR TOPLAMI - CV Total</b>	<b>30.875</b>	<b>34.166</b>											<b>65.041</b>
<b>TAŞIT ARAÇLARI TOPLAMI - MV Total</b>	<b>78.191</b>	<b>79.977</b>											<b>158.168</b>
TRAKTÖR - F.Tractor	739	913											1.652
<b>GENEL TOPLAM - Grand Total</b>	<b>78.930</b>	<b>80.890</b>											<b>159.820</b>

**Otomobil / P.Car**

Firmalar / Firms	1	2	3	4	5	6	7	8	9	10	11	12	Toplam / Total
FORD OTOSAN	-	-	-	-	-	-	-	-	-	-	-	-	-
HYUNDAI MOTOR TÜRKİYE	17.900	16.600	-	-	-	-	-	-	-	-	-	-	34.500
OYAK RENAULT	16.185	20.007	-	-	-	-	-	-	-	-	-	-	36.192
TOFAŞ	97	303	-	-	-	-	-	-	-	-	-	-	400
TOYOTA	13.134	8.901	-	-	-	-	-	-	-	-	-	-	22.035
<b>TOPLAM - Total</b>	<b>47.316</b>	<b>45.811</b>	-	-	-	-	-	-	-	-	-	-	<b>93.127</b>

**Kamyonet / Pick-up**

Firmalar / Firms	1	2	3	4	5	6	7	8	9	10	11	12	Toplam / Total
A.I.O.S.	-	-	-	-	-	-	-	-	-	-	-	-	-
FORD OTOSAN	22.453	22.742	-	-	-	-	-	-	-	-	-	-	45.195
KARSAN	-	-	-	-	-	-	-	-	-	-	-	-	-
OTOKAR	-	1	-	-	-	-	-	-	-	-	-	-	1
TOFAŞ	38	2.591	-	-	-	-	-	-	-	-	-	-	2.629
<b>TOPLAM - Total</b>	<b>22.491</b>	<b>25.334</b>	-	-	-	-	-	-	-	-	-	-	<b>47.825</b>

**Minibüs / Minibus**

Firmalar / Firms	1	2	3	4	5	6	7	8	9	10	11	12	Toplam / Total
FORD OTOSAN	7.178	7.418	-	-	-	-	-	-	-	-	-	-	14.596
KARSAN	-	5	-	-	-	-	-	-	-	-	-	-	5
<b>TOPLAM - Total</b>	<b>7.178</b>	<b>7.423</b>	-	-	-	-	-	-	-	-	-	-	<b>14.601</b>

**Kamyon / Truck**

Firmalar / Firms	1	2	3	4	5	6	7	8	9	10	11	12	Toplam / Total
A.I.O.S.	-	-	-	-	-	-	-	-	-	-	-	-	-
FORD OTOSAN	419	200	-	-	-	-	-	-	-	-	-	-	619
KARSAN	-	-	-	-	-	-	-	-	-	-	-	-	-
M. BENZ TÜRK	12	303	-	-	-	-	-	-	-	-	-	-	315
OTOKAR	-	10	-	-	-	-	-	-	-	-	-	-	10
<b>TEMSA</b>	-	-	-	-	-	-	-	-	-	-	-	-	-
<b>TOPLAM - Total</b>	<b>431</b>	<b>513</b>	-	-	-	-	-	-	-	-	-	-	<b>944</b>

**Midibüs / Midibus**

Firmalar / Firms	1	2	3	4	5	6	7	8	9	10	11	12	Toplam / Total
A.I.O.S.	23	36	-	-	-	-	-	-	-	-	-	-	59
KARSAN	-	10	-	-	-	-	-	-	-	-	-	-	10
OTOKAR	28	40	-	-	-	-	-	-	-	-	-	-	68
TEMSA	21	22	-	-	-	-	-	-	-	-	-	-	43
<b>TOPLAM - Total</b>	<b>72</b>	<b>108</b>	-	-	-	-	-	-	-	-	-	-	<b>180</b>

**Otobüs / Bus**

Firmalar / Firms	1	2	3	4	5	6	7	8	9	10	11	12	Toplam / Total
A.I.O.S.	9	4	-	-	-	-	-	-	-	-	-	-	13
KARSAN	-	1	-	-	-	-	-	-	-	-	-	-	1
M. BENZ TÜRK	256	300	-	-	-	-	-	-	-	-	-	-	556
MAN TÜRKİYE	242	271	-	-	-	-	-	-	-	-	-	-	513
OTOKAR	114	98	-	-	-	-	-	-	-	-	-	-	212
TEMSA	82	114	-	-	-	-	-	-	-	-	-	-	196
<b>TOPLAM - Total</b>	<b>703</b>	<b>788</b>	-	-	-	-	-	-	-	-	-	-	<b>1.491</b>

**Traktör / F.Tractor**

Firmalar / Firms	1	2	3	4	5	6	7	8	9	10	11	12	Toplam / Total
HATTAT TRAKTÖR	18	41	-	-	-	-	-	-	-	-	-	-	59
TÜRK TRAKTÖR	721	872	-	-	-	-	-	-	-	-	-	-	1.593
<b>TOPLAM - Total</b>	<b>739</b>	<b>913</b>	-	-	-	-	-	-	-	-	-	-	<b>1.652</b>

Firmalar / Firms	2024 Toplam / Total	1	2	3	4	5	6	7	8	9	10	11	12	Toplam / Total
Alfa Romeo	1.255	113	96	-	-	-	-	-	-	-	-	-	-	209
Aston Martin	15	4	3	-	-	-	-	-	-	-	-	-	-	7
Audi	19.700	970	1.745	-	-	-	-	-	-	-	-	-	-	2.715
Bentley	37	2	2	-	-	-	-	-	-	-	-	-	-	4
BMW	25.784	1.771	2.374	-	-	-	-	-	-	-	-	-	-	4.145
BYD	8.331	2.758	2.583	-	-	-	-	-	-	-	-	-	-	5.341
Chery	57.047	1.016	2.690	-	-	-	-	-	-	-	-	-	-	3.706
Citroen	43.219	2.126	1.752	-	-	-	-	-	-	-	-	-	-	3.878
CUPRA	9.663	423	436	-	-	-	-	-	-	-	-	-	-	859
Dacia	33.658	1.359	1.839	-	-	-	-	-	-	-	-	-	-	3.198
DFSK	504	21	8	-	-	-	-	-	-	-	-	-	-	29
DS	1.971	125	142	-	-	-	-	-	-	-	-	-	-	267
Ferrari	24	-	2	-	-	-	-	-	-	-	-	-	-	2
Fiat	1.073	13	10	-	-	-	-	-	-	-	-	-	-	23
Ford	29.617	1.619	2.153	-	-	-	-	-	-	-	-	-	-	3.772
Honda	23.632	1.195	1.384	-	-	-	-	-	-	-	-	-	-	2.579
HONGQI	15	1	1	-	-	-	-	-	-	-	-	-	-	2
Hyundai	17.429	1.264	1.410	-	-	-	-	-	-	-	-	-	-	2.674
JAECOO	3.586	421	503	-	-	-	-	-	-	-	-	-	-	924
Jaguar	60	2	5	-	-	-	-	-	-	-	-	-	-	7
Jeep	3.366	204	186	-	-	-	-	-	-	-	-	-	-	390
KG MOBILITY	9.426	622	804	-	-	-	-	-	-	-	-	-	-	1.426
Kia	17.967	1.564	2.091	-	-	-	-	-	-	-	-	-	-	3.655
Lamborghini	22	-	1	-	-	-	-	-	-	-	-	-	-	1
Land Rover	2.973	186	171	-	-	-	-	-	-	-	-	-	-	357
LEAPMOTOR	218	7	3	-	-	-	-	-	-	-	-	-	-	10
Lexus	816	29	43	-	-	-	-	-	-	-	-	-	-	72
Maserati	276	14	10	-	-	-	-	-	-	-	-	-	-	24
Mercedes-Benz	29.967	1.924	2.152	-	-	-	-	-	-	-	-	-	-	4.076
MG	17.162	143	175	-	-	-	-	-	-	-	-	-	-	318
Mini	4.755	292	1.005	-	-	-	-	-	-	-	-	-	-	1.297
Nissan	27.088	1.440	2.015	-	-	-	-	-	-	-	-	-	-	3.455
Opel	45.212	2.416	3.502	-	-	-	-	-	-	-	-	-	-	5.918
Peugeot	53.886	2.425	4.032	-	-	-	-	-	-	-	-	-	-	6.457
Porsche	1.203	74	91	-	-	-	-	-	-	-	-	-	-	165
Renault	26.437	1.846	2.183	-	-	-	-	-	-	-	-	-	-	4.029
Seat	12.470	300	563	-	-	-	-	-	-	-	-	-	-	863
Skoda	43.972	2.359	2.262	-	-	-	-	-	-	-	-	-	-	4.621
SKYWELL	388	22	12	-	-	-	-	-	-	-	-	-	-	34
Subaru	335	75	36	-	-	-	-	-	-	-	-	-	-	111
Suzuki	5.894	295	386	-	-	-	-	-	-	-	-	-	-	681
TESLA	11.534	-	3.310	-	-	-	-	-	-	-	-	-	-	3.310
Toyota	10.004	987	1.652	-	-	-	-	-	-	-	-	-	-	2.639
Volkswagen	74.533	4.293	4.946	-	-	-	-	-	-	-	-	-	-	9.239
Volvo	13.024	698	730	-	-	-	-	-	-	-	-	-	-	1.428
<b>GENEL TOPLAM - Grand Total</b>	<b>689.666</b>	<b>37.418</b>	<b>51.499</b>	-	-	-	-	-	-	-	-	-	-	<b>88.917</b>

Firmalar / Firms	2024 Toplam / Total	1	2	3	4	5	6	7	8	9	10	11	12	Toplam / Total
Citroen	18.009	1.027	1.361	-	-	-	-	-	-	-	-	-	-	2.388
DFSK	675	43	36	-	-	-	-	-	-	-	-	-	-	79
Fiat	24.516	1.601	1.484	-	-	-	-	-	-	-	-	-	-	3.085
Ford	33.844	1.814	2.085	-	-	-	-	-	-	-	-	-	-	3.899
FOTON	-	5	48	-	-	-	-	-	-	-	-	-	-	53
Hyundai	4.414	51	41	-	-	-	-	-	-	-	-	-	-	92
Isuzu	1.584	36	33	-	-	-	-	-	-	-	-	-	-	69
Iveco	3.850	110	301	-	-	-	-	-	-	-	-	-	-	411
KG MOBILITY	2.444	158	206	-	-	-	-	-	-	-	-	-	-	364
MAXUS	302	20	31	-	-	-	-	-	-	-	-	-	-	51
Mercedes-Benz	10.260	554	698	-	-	-	-	-	-	-	-	-	-	1.252
Opel	17.244	1.078	1.094	-	-	-	-	-	-	-	-	-	-	2.172
Peugeot	19.656	921	1.047	-	-	-	-	-	-	-	-	-	-	1.968
Renault	15.677	613	564	-	-	-	-	-	-	-	-	-	-	1.177
Toyota	9.086	524	787	-	-	-	-	-	-	-	-	-	-	1.311
Volkswagen	22.266	969	1.078	-	-	-	-	-	-	-	-	-	-	2.047
<b>GENEL TOPLAM - Grand Total</b>	<b>188.048</b>	<b>9.524</b>	<b>10.894</b>	-	-	-	-	-	-	-	-	-	-	<b>20.418</b>